



A Publication of the
Northwest Lions Eyeglass Recycling Center
February, 2009



The Trifecta

It's Not Just for Horses Anymore

John Kirry, President, NWLERC

In horse racing circles, a **Trifecta** is a pari-mutuel bet in which the bettor must predict which horses will finish first, second, and third in exact order. At NWLERC, we have our own version of the Trifecta and it's a safe bet to say that a lot of clubs don't know exactly what it is. Let me explain.

To encourage involvement in NWLERC, we established our Trifecta as a way to encourage and acknowledge the hard work and contributions of clubs (or zones, if clubs band together to make a collective zone project), and there is no off-track betting involved!

There are several ways clubs can contribute to the NWLERC Trifecta program, and doing **three** of them in a given Lions year qualifies a club or zone for a banner patch. (...thus the "tri" in trifecta) Here's how your club can help NWLERC down the backstretch and at the wire:

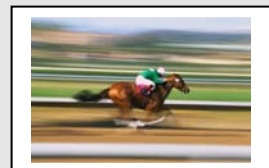
- Collect eyeglasses
- Make a financial contribution
- Volunteer your time
- Schedule a monthly work party at our Center

By accomplishing three of the above activities, your club can achieve thoroughbred status and win the Trifecta award and the coveted banner patch. Last year, twenty three clubs, all from District C were Trifecta winners. This is logical, since NWLERC started as a District C program. **But now we're a Multiple District 19 program and we are hopeful that all clubs and zones in our multiple district will participate.**

While I'm on the subject of donations, let me say something about your much-appreciated financial contributions to NWLERC. First, we would like to commend the many clubs who put us in their yearly budget and regularly send us a financial donation. Your contributions provide the essential foundation of our operating budget and quite literally allow us to keep the doors open. Clubs who support us year-in and year-out usually do so in the range of \$100 to \$500, some more, some less. But here's a simple fact: if every club in MD-19 contributed \$50 per year, our budget goals would be achieved, right out of the gate.

We hope to see your club or zone in the Trifecta Winners Circle this year.

John



NWLERC Staff

John Kirry
President and CEO
Focus Editor

PZC Jeannie Phillips
Secretary

PZC Mel Williamson
Vice President-
Fundraising

PDG Emerson Bishop
Vice President-
Outreach

Lyell Clark
Treasurer

Brian Thompson
Chief Operations Officer

Claire Thompson
Quality Assurance
Special Projects

Terri Warren
Volunteer Coordinator

Ed Kane
Public Relations
Website

Pat Baron
Recycling Manager
Quality Assurance

PZC Pat Phillips
Facilities Manager

Michael Petty
Quality Assurance

PZC Bob Pinson
Founder

Terry Wright
Co-Founder and
Prison Partnership
Coordinator

Contact Us
Northwest Lions
Eyeglass Recycling
Center
9013 Mullen Rd
Olympia WA 98513
360-923-2075
Info@lionsnwlerc.org

A 501(c)3 Foundation

Things you should know about ---

February, 2009

Our thanks to MD-19 and Webmaster Stacey Walters for enabling us to temporarily host the Focus on the MD-19 website —Ed.

Our new website is coming along very nicely. PR chief and Webmaster **Ed Kane** has done a fantastic job of putting together a great site that will be functional, attractive and useful. Just like Ed.

Thanks go out to Chief Operations Officer **Brian Thompson** for his generous donation of a new coffee pot and a VERY cool digital picture frame. The frame presents a continuous slide show of mission photos and photos of our volunteers at work. Have a look when you're at the center; you just might see yourself!



Thanks also to our recycling czar **Pat Baron** (left) who generously donated a lighted magnifying device to NWLERC. It's now a lot easier to see those tiny letters on our gold glasses!

Overdue thanks go out to facilities director **PZC Pat Phillips** for all he does to keep our center operating smoothly. He's our behind-the-scenes "Tim the Toolman" and does everything from keeping the dishwashers running to installing new lighting in the storage trailer. Thanks, Pat!

Just So You Know... Here are some interesting numbers about our overall eyeglass processing from **Brian Thompson**:

- We receive about 10,000 pairs of eyeglasses each month
- We send about 5,400 pairs to recycling
- We produce about 1600 pairs of mission-ready eyeglasses. And...drum roll, please...
- We accumulate about 3000 pairs in our storage trailer.

Even if your math skills are temporarily on vacation, you can see the need to improve ability to produce more mission-ready eyeglasses. **To put it simply, our current needs are more trained lens-tech and a faster way to wash glasses.** We're working on both...

More numbers: In our nearly five years of existence, we have received over a **half million pairs of eyeglasses**, and sent almost **60,000** pairs of mission-ready eyeglasses on **59** missions to **22** countries!

Board of Directors News. We conducted our very first MD-19 Board of Directors meeting on January 24, 2009. It was a smashing success. Details below.

Board of Directors Gather and See NWLERC in Action.

On Saturday, January 24, NWLERC officers and staff hosted our first-ever Board meeting with Directors from across the Multiple District. Four of our eight directors traveled long distances to NWLERC headquarters in Lacey to receive comprehensive briefings on operations, finance, outreach, fundraising and public relations. They also considered and voted on significant changes to our bylaws. The Board meeting was organized and chaired by NWLERC President and Chief Executive Officer **John Kirry**.

Board members in attendance were **Sue Campbell, Russ Fineman, Marty Vetere** and **Bonnie Williamson**.



Sue Campbell
Renton Lions
District B



Russ Fineman
Moses Lake
Lions
District D



Marty Vetere
Pt Townsend
Branch Lions
District I



Bonnie Williamson
Shelton Lions
District C

The operational briefings for the Board Members began with reports and tours of the facility. **Brian Thompson** and **Dr Bob Pinson** described our history and how we collect, receive, clean and read glasses. Volunteer Coordinator **Terri Warren**, Materials Recycling specialist **Pat Baron**, Facilities Coordinator **PZC Pat Phillips**, and Quality Assurance specialist **Michael Petty** all gave concise presentations to the Board Members. Secretary **PZC Jeannie Phillips** put together a comprehensive information notebook containing reports, charts, data sheets and CD's for each Board Member.

The board also heard a report from **Dr Ken Henderson** from the Bellingham Central Lions Club. Dr Henderson made the long trip down from Bellingham towing a trailer full of collected glasses. He then loaded the trailer with about 5000 pairs of mission-ready glasses for his upcoming eyeglass distribution mission to El Salvador. Dr Henderson also brought with him a used lensometer which he generously donated to NWLERC.



NWLERC President **John Kirry** kicks off the Board of Directors meeting on January 24th.



Dr Ken Henderson
Bellingham Central
Lions

Board Meeting continued below...

Board of Directors Meeting, Continued...

After the operational briefings, the entire group moved to the Hawks Prairie restaurant to conduct further Board business over dinner. President **John Kirry** continued the meeting by presenting the NWLERC Power Point briefing to the assembled Board. This presentation has been changed recently to include more mission photos of our “customers.”

Satellite Coordinator Jeannie Phillips then reviewed the Satellite Operations Power Point so the Directors could familiarize themselves with the contents. Each director was given a CD to take back to their district. The CD contained the Power Point, and all the forms necessary for satellite operation.



Satellite
Coordinator
Jeannie Phillips
presents a Power
Point on Satellite
Operations to the
Board of
Directors.

The Board then heard a series of in-depth reports from NWLERC officers. First off, VP-Fundraising **PZC Mel Williamson** gave a report on fundraising efforts and the need to visit clubs and seek donations. He encouraged Directors to ask clubs to include NWLERC as a line item in their budgets.

VP-Outreach **PDG Emerson Bishop** described the Trifecta Program and the efforts being made to get more club/zone involvement.

Director of Public Relations, **Ed Kane**, unveiled the new Website Design and showed the Board members some initial content pages and other features. New and updated pages will make the site friendlier and easier to navigate. The planned website drew lots of compliments.

Treasurer **Lyell Clark** gave a very thorough financial status presentation. The bottom line is that we're holding our own. Operational spending is somewhat ahead of last year's position, while contributions have lagged. Many clubs don't make financial contributions until the year is further along which give the impression that we are behind the budget line. We have adequate reserves. One area where we could benefit is having a good grant writer. As we grow larger, we need to anticipate the funds necessary to move into a larger facility.

Operations Officer **Brian Thompson** gave a more detailed and extensive review of Operations. He stressed our continuing commitment to Quality Assurance which has become our hallmark. He thanked everyone for their work done thus far that has enabled steady growth. He challenged the Directors with a simple fact: We receive about 10,000 glasses per month at the center, yet because of constraints in washing and reading, we only are only able to produce about 1600 pairs of mission-ready glasses per month.

And finally, President **John Kirry** proposed a series of changes to the Board of Director bylaws. The biggest change was a requirement to increase Director terms-of-office to LCI mandated two-year terms. Other changes: Allowing Directors to receive up to \$200 per year in reimbursable expenses for travel directly related to LERC; Allowing District elections for Board positions beginning in 2011; Adding a comprehensive job description giving Directors the responsibility to be active advocates and “Ambassadors” for NWLERC in their Districts. The board passed these changes unanimously.

Kudos to all who participated. Our first MD-19 Board Meeting was a great success!



SEE Cruise 5 – Alaska Cruise/Tour

Northwest Lions Eyeglass Recycling Center Fundraising Cruise

August 29 – September 9, 2009 (ends September 5 for cruise Only)

7-night Alaska cruise aboard the Diamond Princess®

With 5 day Direct to the Wilderness Tour

Miles away from life as you know it –

Surrender your senses to life's simple pleasures. Breathe the air, scan the majestic skies. You may lose count of the shining peaks on the horizon, but one thing is for sure, you'll never forget them. The best part of the wilderness is the tranquility that soaks in. Slow down and wonders will appear. Crossing paths with moose and caribou, watching Dall sheep perched on cliffs and eagles high in the sky, seeing a brown bear with cubs in tow. You never know how many amazing sights and sounds wait for you out on the trail.

Escape completely® as you join us and Princess Cruises on this adventure to America's last frontier.



Email: lyell@vacation-4-you.com

Pricing per person Double Occupancy

Cruise Tour:

From **\$1,737 ***

Cruise Only:

From **\$699 ***

*Price includes \$25 per person tax deductible donation to NLERC Government fees and fuels surcharges are in addition to above prices and are subject to change.

12-night Diamond Princess Alaska Cruise Tour

DAY	DESTINATION	ARR.	DEP.
Sat	Vancouver, BC Canada		4:30 pm
Sun	At Sea		
Mon	Ketchikan, Alaska	6:30 am	2:00 pm
Tue	Juneau, Alaska	8:00 am	9:00 pm
Wed	Skagway, Alaska	7:00 am	8:30 pm
Thu	Glacier Bay Scenic Cruising	6:00 am	3:00 pm
Fri	College Fjord Scenic	5:30 am	8:30 pm

Contact Lyell at
Vacations Unlimited
Phone: 360-459-5240
Toll Free: 877-659-5240

Prices are Cruise/Cruise tour only, per person in US dollars, based on double occupancy category J, capacity controlled and are subject to availability. **Government Fees, Taxes and Fuel Surcharges of \$163.21 cruise only or \$187.74 cruise tour** are additional and are subject to change. Other restrictions may apply. Prices are subject to change. Refer to appropriate Princess brochure or princess.com for terms, conditions and definitions which will apply to all bookings. Promotion ends 05/1/2009.

*Price includes a \$25 donation to the Northwest Lions Eyeglass Recycling Center. Please contact your tax advisor to determine tax deductibility of this donation. Ship registry: Bermuda WST601014955

CRUISE BOOKING INFORMATION

NW LERC Fundraising Cruise

Please use one form per cabin. If you are making reservations for more than one cabin please feel free to make photocopies of this form.

What is the Legal name of each passenger that will be sharing this cabin:
(as it appears on your passport or other form of identification)

1) _____
Name birthdate Nationality Passport No.
Expiration date

2) _____
Name birthdate Nationality Passport No.
Expiration date

3) _____
Name birthdate Nationality Passport No.
Expiration date

4) _____
Name birthdate Nationality Passport No.
Expiration date

It is highly recommended that anyone traveling outside of the U.S. have a valid passport.

Please select one: ___ 12-day Cruise Tour ___ 7-night Cruise Only
Please Indicate choice of cabin type or category: Inside ___ Outside ___ Veranda ___ Suite ___
Other Category Special Request _____

Do you need air transportation. _____ If yes, from what city _____
Do you have any special dietary requirements: _____
Do you have any other special requirements: _____
Are you celebrating any special occasions(i.e. birthday, anniversary, ect.) _____

Are you interested in an additional pre or post cruise package: _____
If yes, how many days: ___ pre ___ post.
At which hotel: _____
(See Brochure for details)

Cruise Protection Options (Check the one that applies. One option must be checked)
___ Please provide pricing for Princess Travel CareSM Options.
___ Please send me information on independent Travel Insurance.
___ I understand the risk and elect not to purchase either of the travel protection plans at this time.

All of the information I have given is correct and reflects my(our) preferences and elections.

Signature of lead passenger _____ Date

Address: _____ Phone: _____
Email Address: _____

Deposit Payment Options:
Initial deposit is or 30% of the cruise tour price 20% of the cruise only price.
___ I wish to pay my deposit by check. Please contact me with the exact amount of deposit required.
___ Please Charge my deposit to the following credit card:

Card Type _____ Account Number _____ Exp Date _____
(visa, MC, Discover, AmEx etc.)
Name on Card _____ Signature _____

Mail completed form to: Vacations Unlimited, PO Box 3972, Lacey, WA 98509

